



## Ravens Avenue, Essex, CO9 1YA

**Rent - £1,350 PCM      Deposit - £1,557**

Nestled in the area of Ravens Avenue, Halstead, this semi-detached house is available for rent. Boasting four bedrooms, this property is perfect for families or those seeking extra space. The heart of the home features a welcoming lounge/diner, ideal for both relaxation and entertaining guests. The layout of the house is designed to provide comfort and functionality, ensuring that every member of the household has their own space. This property offers an opportunity to enjoy the local amenities and community spirit that Halstead has to offer. With its living space and convenient location, this semi-detached house is a fantastic choice for anyone looking to make a new home. Don't miss the chance to experience comfortable living in this lovely property.

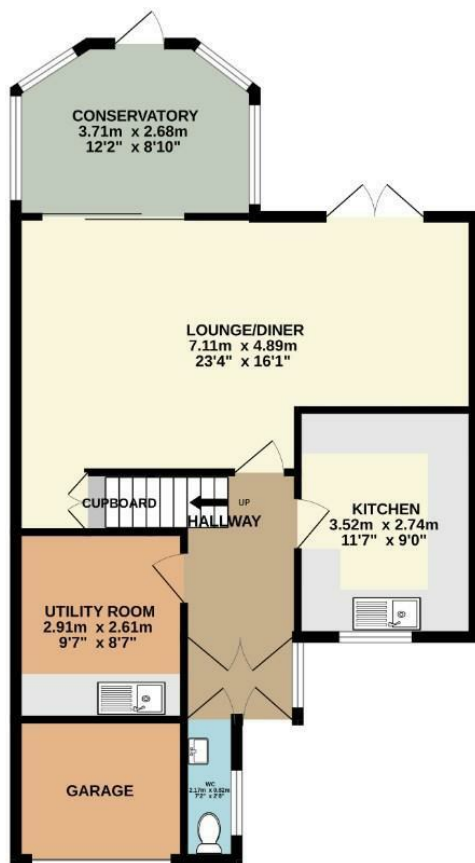
- SEMI DETACHED HOUSE
- FOUR BEDROOMS
- CLOSE TO LOCAL AMENITIES
- FAMILY BATHROOM
- DRIVEWAY/ ENCLOSED REAR GARDEN
- LOUNGE/ DINER
- GAS CENTRAL HEATING AND ENERGY RATING D
- APPROXIMATE SIZE - 1140 SQ FT
- SORRY NO PETS/ COUNCIL TAX BAND C
- AVAILABLE SEPTEMBER



Council Tax Band: C - EPC Rating: D 68



GROUND FLOOR  
68.6 sq.m. (739 sq.ft.) approx.



1ST FLOOR  
44.5 sq.m. (479 sq.ft.) approx.



TOTAL FLOOR AREA: 113.1 sq.m. (1218 sq.ft.) approx.

Whilst every attempt has been made to ensure the accuracy of the floorplan contained here, measurements of doors, windows, rooms and any other items are approximate and no responsibility is taken for any error, omission or mis-statement. This plan is for illustrative purposes only and should be used as such by any prospective purchaser. The services, systems and appliances shown have not been tested and no guarantee as to their operability or efficiency can be given.  
Made with Metropix 6/2025.

